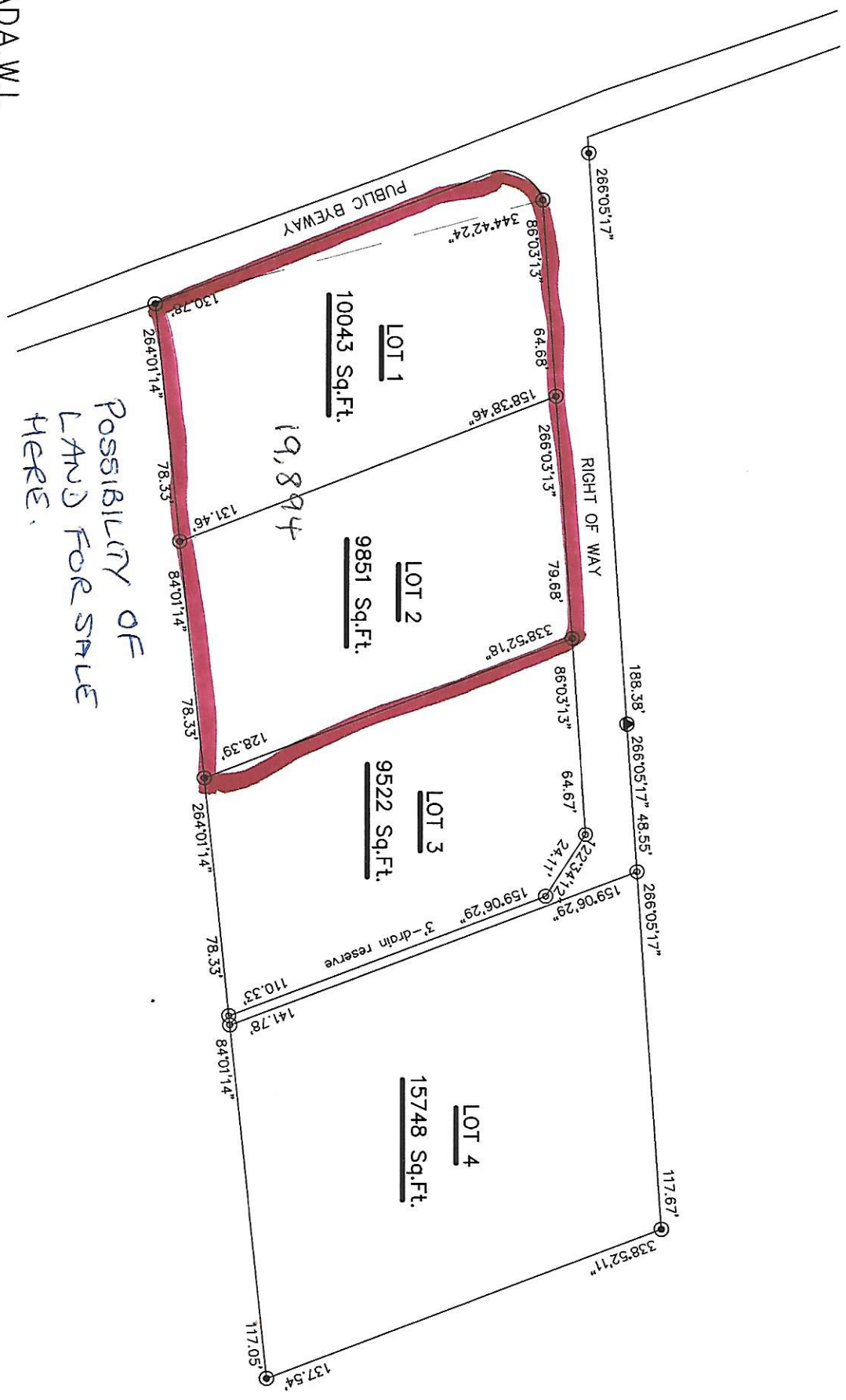


GRENADA, W.I.

SUBDIVISION PLAN of a lot of land situate at BELAIR in the ISLAND of CARRIACOU, a DEPENDENCY of the ISLAND of GR
Surveyed on the 18th. day of JANUARY, 2007.

SCALE: 1-IN.=50FT.



Possibility of
LAND FOR SALE
HERE.